

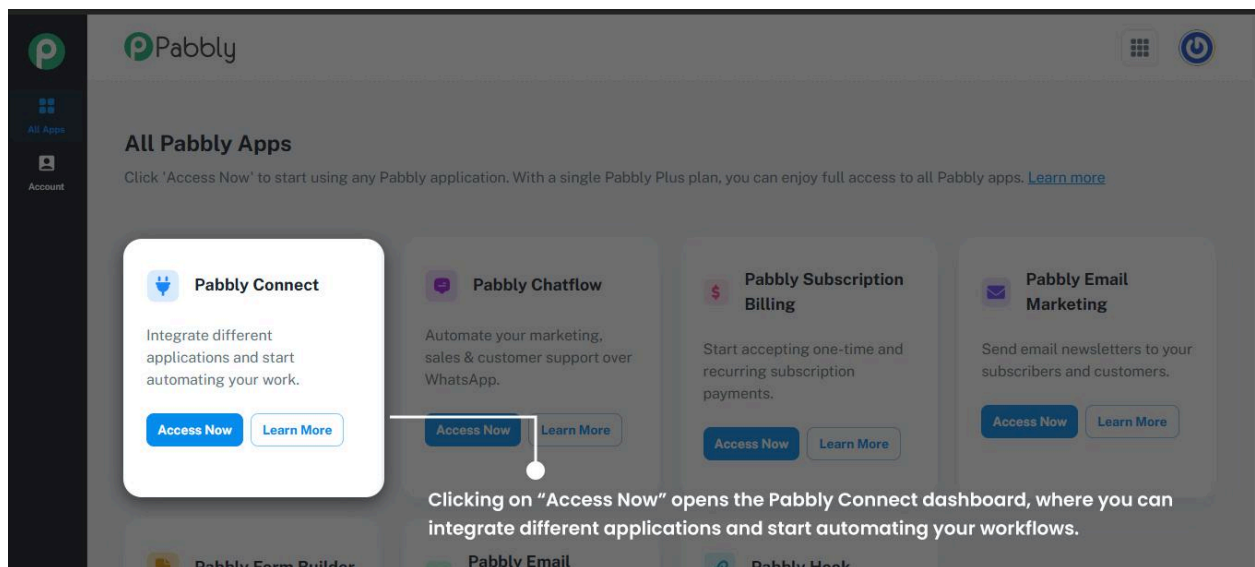
365 CRM Pabbly Integration

This document explains how to integrate **365 CRM with Pabbly Connect** to automatically send lead data from the CRM to Pabbly workflows. By connecting 365 CRM with Pabbly using a webhook, businesses can automate tasks such as lead processing, notifications, and data synchronization with other applications.

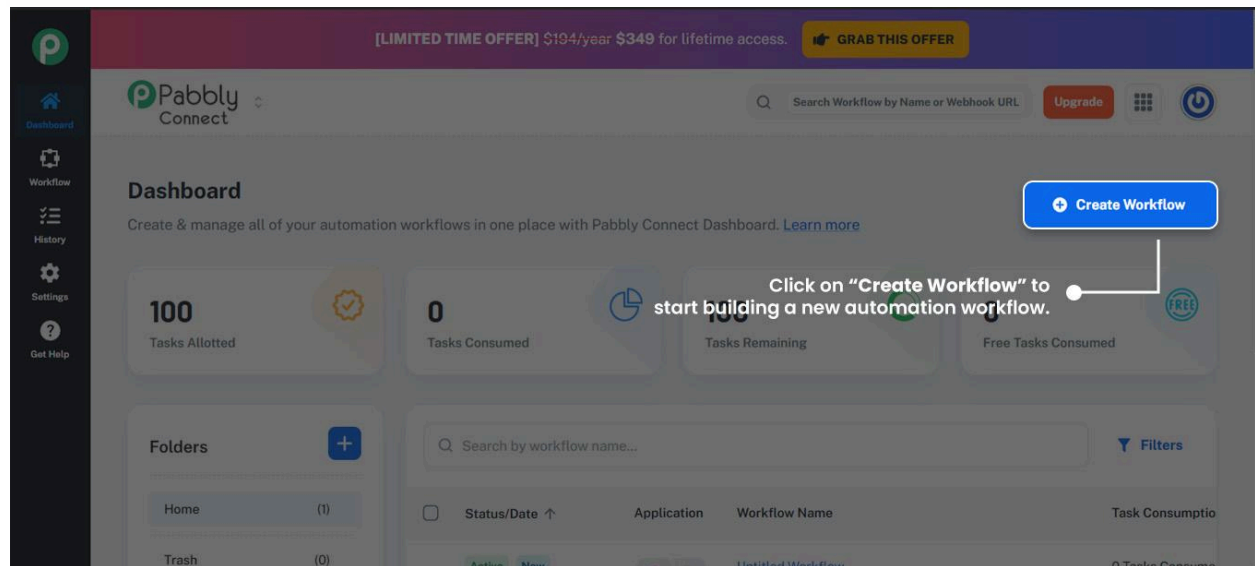
The integration works by generating a **Pabbly webhook URL** and connecting it within the **365 CRM third-party integration settings**. Once configured, any new lead or relevant data from 365 CRM can be captured by Pabbly and used to trigger automated workflows.

Step 1 : Generate Pabbly Webhook URL

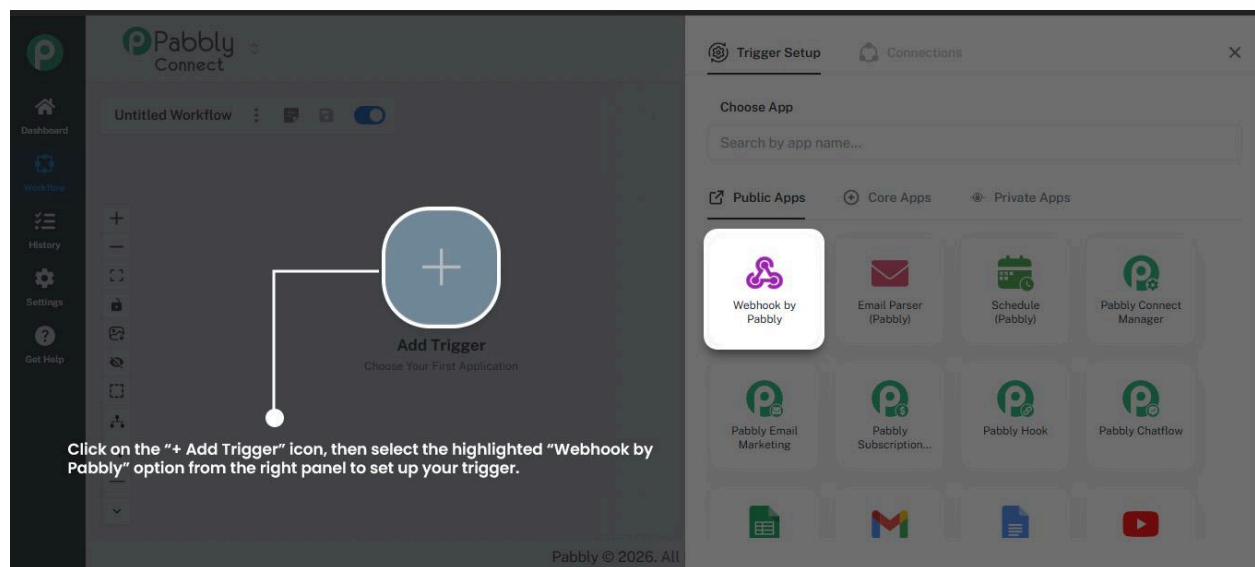
- visit pabbly.com, login to your account, then go to the Pabbly Connect app.



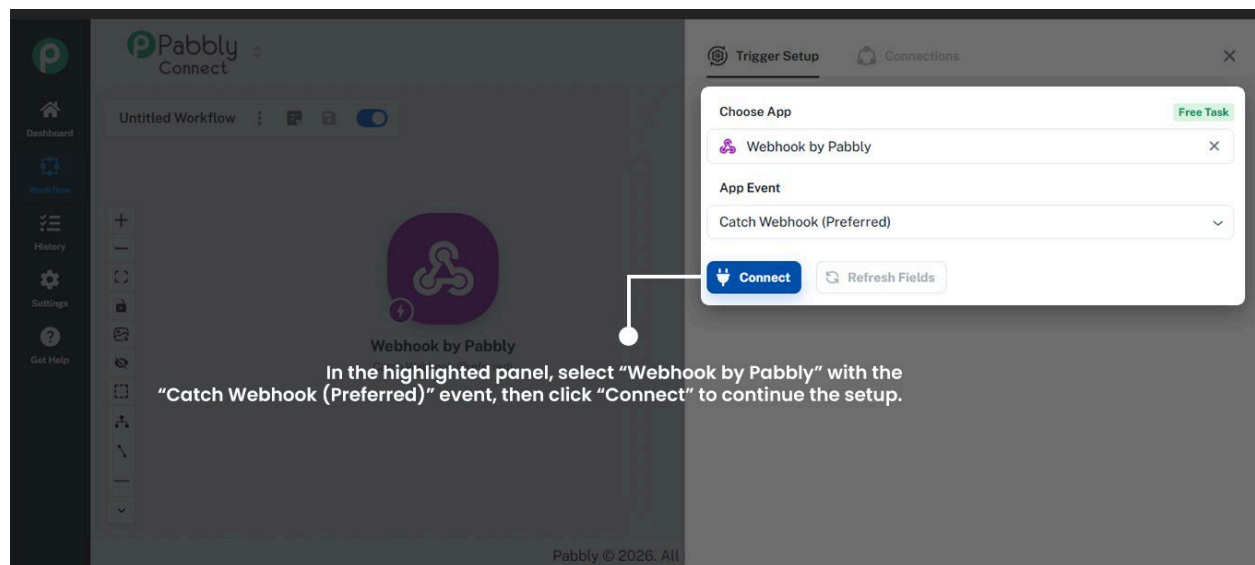
Step 2 : Create new workflow in pabbly connect



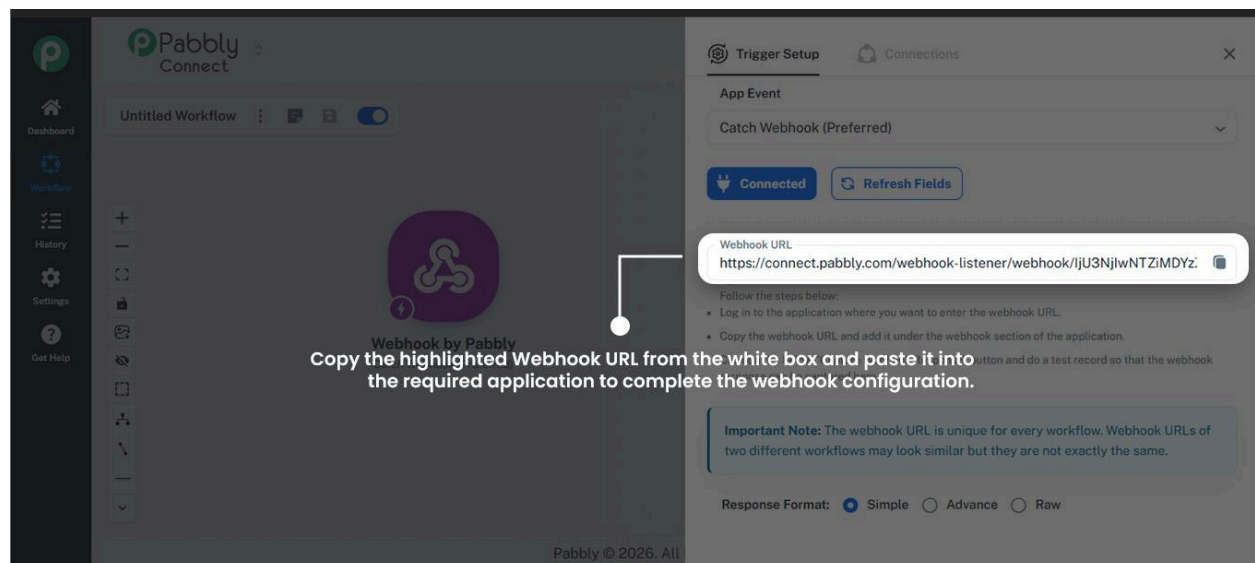
Step 3 : After make a workflow , click on a empty node and right side open a menu and in this select a webhook by pabbly



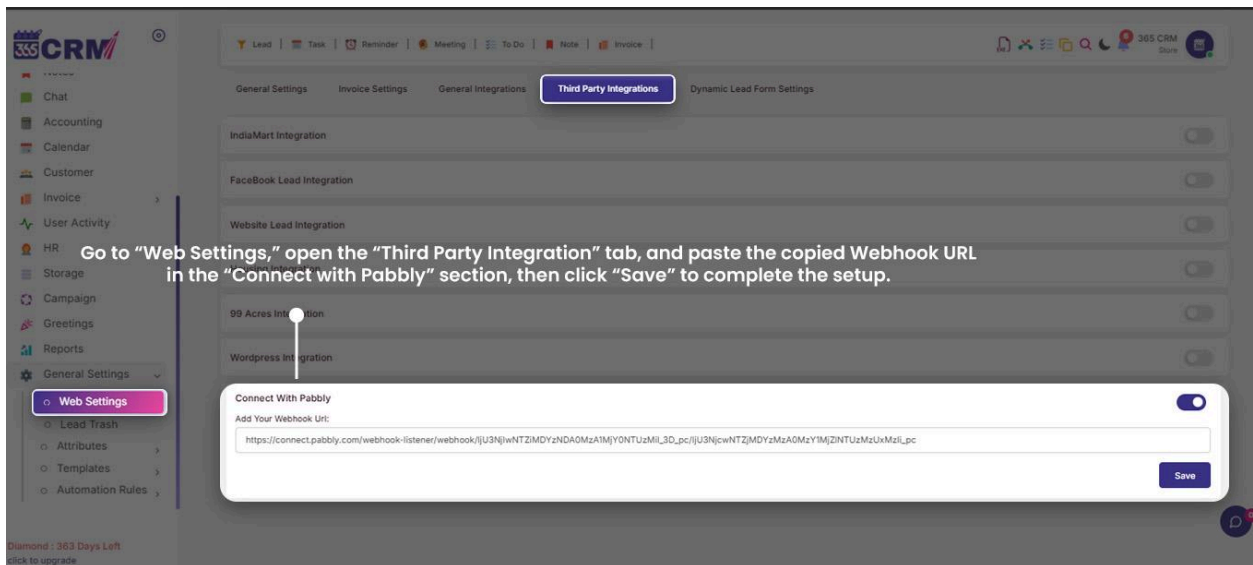
Step 4 : App event in select a 'Catch Webhook (Preferred)' and click on a Connect.



Step 5 : After connected webhook pabbly, copy webhook url and login your 365 CRM



Step 6 : Past that pabbly webhook url to crm in a General Settings >> Web Settings >> Third Party Integrations >> Connect With Pabbly



Go to "Web Settings," open the "Third Party Integration" tab, and paste the copied Webhook URL in the "Connect with Pabbly" section, then click "Save" to complete the setup.

Notes:

1. Ensure you have active accounts for both 365 CRM and Pabbly Connect before starting the integration.
2. The integration uses webhooks to transmit lead data from CRM to Pabbly.
3. Always copy the webhook URL correctly from Pabbly and paste it into the CRM integration settings.
4. Verify the connection after setup to ensure data is successfully received in Pabbly workflows.
5. This setup allows you to automate lead handling and integrate CRM data with multiple apps supported by Pabbly Connect.